



shade by design

vista *Range*

vistaweave | vistaweavePlus | vistashade | vistascreen90

Keeps out the sun, lets in the view.

The VistaRange is a unique selection of see-through awning fabrics that provide a choice of larger widths, more even construction and a wide range of designer colours and patterns.

They keep the sun out whilst still allowing you to enjoy the view.

Vistaweave, vistaweavePlus, vistashade and vistascreen90 are Greenguard Certified to contribute to the health of the environment and are manufactured in the USA by Twitchell.

Guaranteed good looks

When you choose from the VistaRange you're guaranteed good looks and a fabric made from hard wearing, UV stable, high tensile PVC. Exceptional strength and durability make these fabrics ideal for fixed and roll up awnings, interior roller blinds, outdoor furniture, umbrellas and shade sails.

At home on any window

The VistaRange fabric is not only at home on residential windows and outdoor areas, they are also ideally suited to industrial and commercial applications.

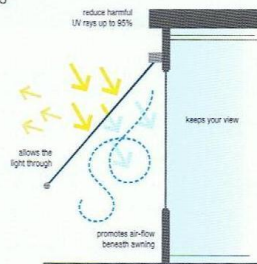
Keeping your cool

Filtering out the sun's harmful UV and glare the VistaRange keeps you cool. Its open weave construction means that heat is not trapped under the awnings and allows air to flow freely in and around the awning.

The VistaRange at a glance

- 10 Year limited warranty against UV degradation*
- Easy to clean and maintain, simply hose down
- Residential, Commercial & Industrial applications
- High tensile, hard wearing PVC construction
- Wide range of designer shades and colours
- Contains special fire retardant additives
- Filters out the Sun's damaging UV rays
- Salt air proof – ideal for seaside areas
- Reduces interior temperatures
- Promotes airflow and ventilation
- Will not rot and resists mildew
- Manufactured in the USA
- Reduces cooling costs

*Condition apply



10yr Limited Warranty against UV degradation



vistaweavePlus

500  gsm

— 305 cm —

2x2 

A positive point-of-view

This fabric is a 2 x 2 weave, wider width (305cm) version of vistaweave and also the same weight – 500gsm. Its even construction in warp and weft is ideal for railroading with even tension both ways to provide a blind with 300cm drop as wide as required without joins.

Openness factor: 5%. 10 Year limited warranty against UV degradation.

Ideal for external awnings, automatic sun blinds and folding arm awnings. It can also be used for internal blinds.



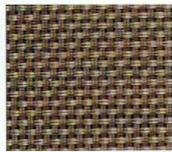
Gravel



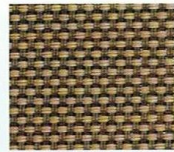
Night Sky



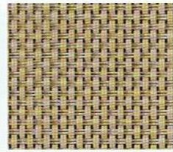
Pewter



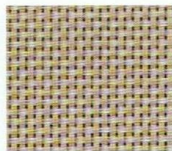
Copper



Grecian Gold



Taupe



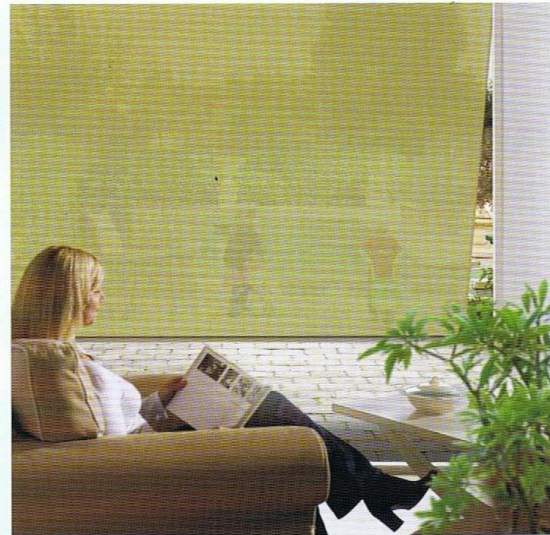
Oyster

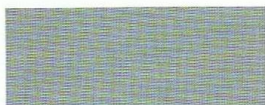


Peppercorn

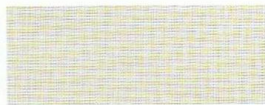


Congo





Ash Grey



Porcelain



Charcoal



T292



Black



Putty



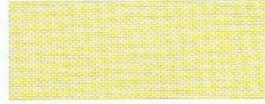
Sienna



T294



Storm Blue



Latté



T016



T309



Sorrento Blue



Capuccino



T019



T950



Steel Blue



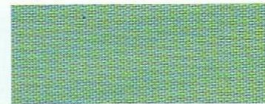
Ivy



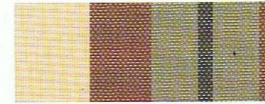
T232



Navy



Green Tea



T264



Cinnamon



Federation Green



T278



Nutmeg



Champagne



T279



Almond



Chinaberry



T282



vistaweave

500 

┌ 220 cm ─┐

2x1 

All the colours under the sun.

There is only one vistaweave. It is the original 2 X 1 weave mesh fabric, tried and tested and delivering stylish shade solutions for over 25 years. The ideal fabric for windows where a wider fabric is not required. Its 220cm width and wide range of designer colours and stripes make it ideal for standard window openings or any residential or commercial installation.



Openness factor: 10%. 10 Year limited warranty against UV degradation.

Vistaweave unique fabric allows for air flow and does not trap heat



vistashade

573  gsm

┌ 302 cm ─┐

2x2 

It's much cooler in the shade

Vistashade is a heavy duty (573gsm) 2 X 2 weave external shade fabric available in 302cm width to allow wider openings to be covered without fabric joins. Its fire resistant 2 x 2 construction provides strength and stability and a better view because of its even weave. Available in a range of designer colours vistashade is ideally suited for residential and commercial installations where high winds are a factor and a heavy duty fabric is required.

Openness factor: 5%. 10 Year limited warranty against UV degradation.



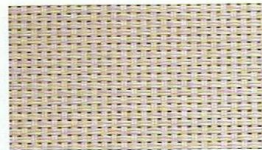
Cashmere



Charcoal



Shell



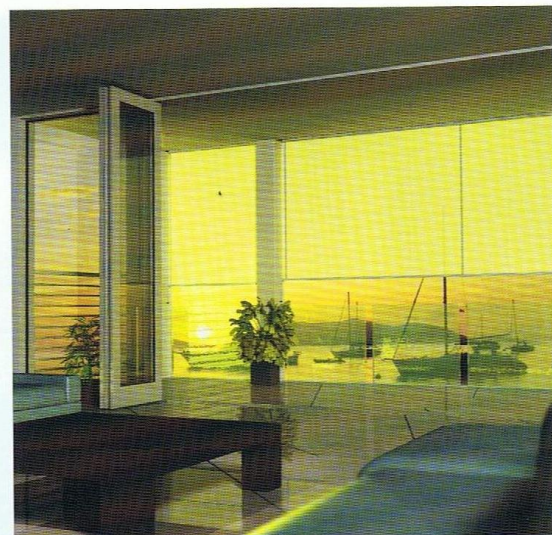
Straw




Blue Moon



Black



vistascreen90

520  gsm

┌ 305 cm ─┐
└ 243 cm ─┘

1x1 

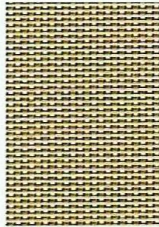
Vistascreen90 is ideal for external awnings that require a wider blind with a 10% openness factor. Its 1 X 1 weave and its 243cm or 305cm wide widths* make it suitable for railroading to provide a blind without joins. Its 10% openness factor enables even better vision for this see through mesh fabric that shades without losing the view.

*Available in 243cm width (Black, Grey, White and Beige) and 305cm width (Black, White, Beige, Desert Sand, Bronze, Capuccino, Charcoal, Steel Blue and Fern).

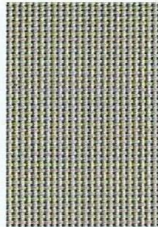
10 Year limited warranty against UV degradation.



White*



Beige*



Grey*



Charcoal



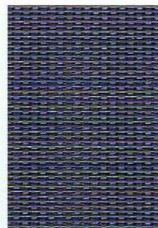
Desert Sand



Bronze



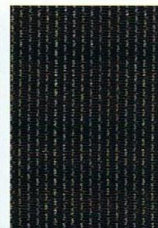
Capuccino



Steel Blue



Fern



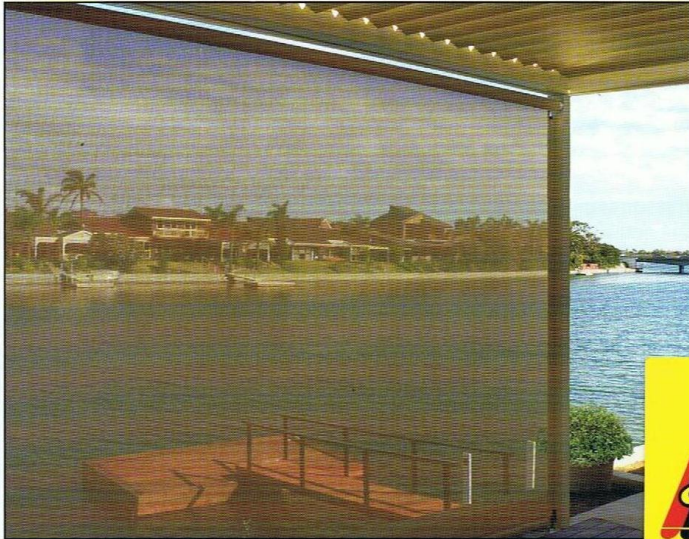
Black*

*also available 243 cm width

shade by design

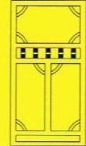
vistaRange

vistaweave | vistaweavePlus | vistashade | vistascreen90



Colours & patterns shown are an indication only and may change without notice. Please check current swatch samples for accurate colours.

ESSENDON BLINDS & Screens



2A FAWKNER ST. ESSENDON 3040
Ph: 9337 2011 or 9379 9066 Fax: 9337 9066
www.essendonblinds.com.au

We Measure, Make and Fit

SPECIALISING IN: CANVAS SUNBLINDS, HOLLAND BLINDS, VERTICAL BLINDS,
SLIMLINE/MICRO VENETIANS, CEDAR VENETIANS, PLANTATION SHUTTERS,
SECURITY DOORS/SCREENS, FLY SCREENS, LACE CURTAINS, REPAIRS & ALTERATIONS

For your nearest stockist call 1300 78 66 98



Manufactured by Twitchell
Exclusively imported by Radins Australia Pty Ltd
7 Conifer Crescent, Dingley Village, VIC. 3172
125 Delta Street, Geebung, QLD. 4034
• www.radins.com.au • service@radins.com.au

